

FABI: Submission of samples for diagnosis



The FABI Diagnostic Clinic

- The Diagnostic Clinic provides a free disease diagnostic service to its members and partners. In this way, plant disease problems can be readily identified. Information accumulated through this service is added to the FABI database on diseases and ensure a long-term record of trends associated with pest and pathogen outbreaks. In addition, selected isolates and specimens of important disease agents are stored using state of the art technologies. These cultures and specimens are a critical resource for plant health research in the country.

Collection of Samples

To ensure accurate diagnoses, special care must be taken when collecting samples. Try to collect samples that accurately represent the disease symptoms at hand. Many disease symptoms are subtle, e.g., those associated with root disease are often identical to those from basal stem cankers. Collect tissue representing the primary symptoms concerned. In the case of root or stem diseases, these samples should preferably be from trees that are in the process of dying and should include both diseased and healthy tissue. If possible, include samples from at least five plants. Insect specimens, such as beetles, larvae or moths should be sent in small vials filled with surgical alcohol.

Preparation for dispatch

1. Contact us directly to discuss a disease problem before samples are collected and dispatched.
2. An information sheet should be completed before sending the samples so that the clinic can prepare for the sample's arrival.
<http://app.informationhub.io/form/cl5geprlm01764ts6txd31t1n>
3. Samples should be individually wrapped and labelled and placed in a sturdy box or padded envelope. Soil samples should be between 150 and 300 grams and sealed in a plastic bag.
4. Send samples overnight via courier to ensure sample freshness.

5. Collected samples

6. Fill in the Diagnostic Clinic Information Sheet

6. Package the samples in appropriate packaging

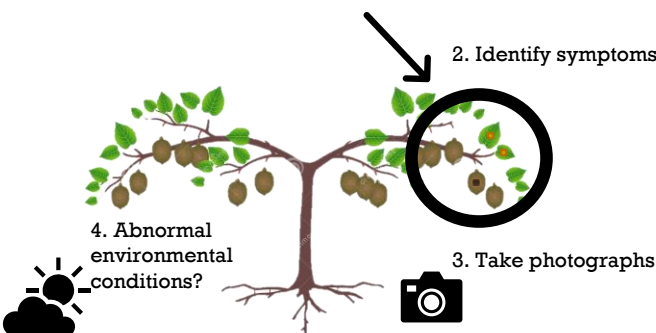
6. Ship the samples to FABI overnight

1. Identify diseased plant

2. Identify symptoms

4. Abnormal environmental conditions?

3. Take photographs



To: Lieschen de Vos
FABI
University of Pretoria
Lunnon Road
Hillcrest
0083
Pretoria
South Africa



<https://www.fabinet.up.ac.za/index.php/special-projects/diagnostic-clinic>



Cheyenne Theron

Cheyenne.theron@up.ac.za