

Ambrosia beetles

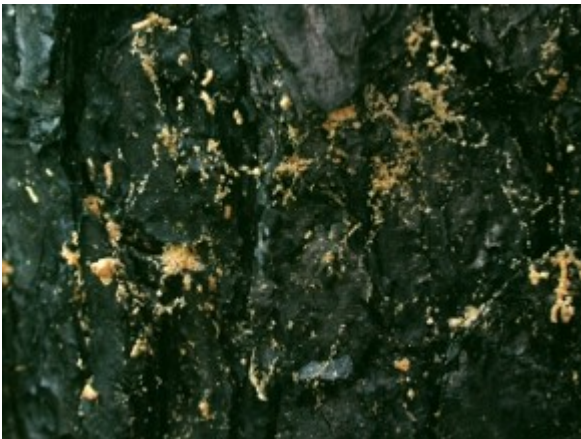
Insect name: Ambrosia beetles

Causal agents: *Xyleborus* spp.
Xyleborinus spp.

Trees affected: *Pinus* spp.

Feeding: Wood borer

Symptoms: Stains wood; galleries with small dark brown beetles (2-3 mm) and larvae in sapwood; very small entrance holes with protruding frass; holes go into sapwood



Frass pushed to bark surface by boring beetles



Xyleborinus saxeseni beetles boring in wood



Section of wood showing multiple tunnels



Fungal stain associated with tunneling of ambrosia beetles