

Eucalyptus gall wasp

Insect name: Eucalyptus gall wasp

Causal agents: *Leptocybe invasa*

Trees affected: *Eucalyptus* spp.

Feeding: Gall former

Symptoms: Galls (malformations) on mid-rib of leaves and on petioles and stems; stunted and gnarled looking trees



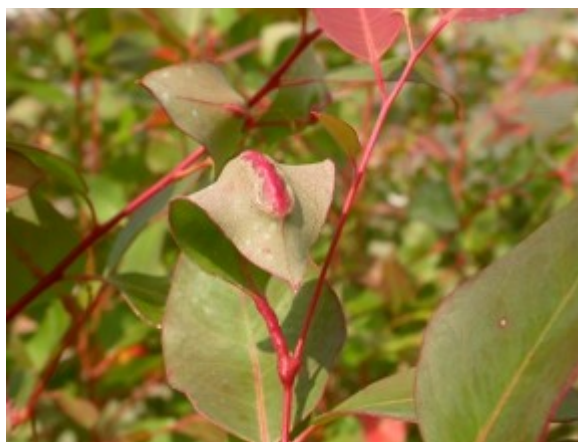
Wasp (1.1-1.4 mm long) (photo by Zvi Mendel)



Oviposition marks on midrib of leaf



Galls developing on leaf



Gall development causing leaf-curling



Tree showing heavy infestation



Emergence holes of wasps